

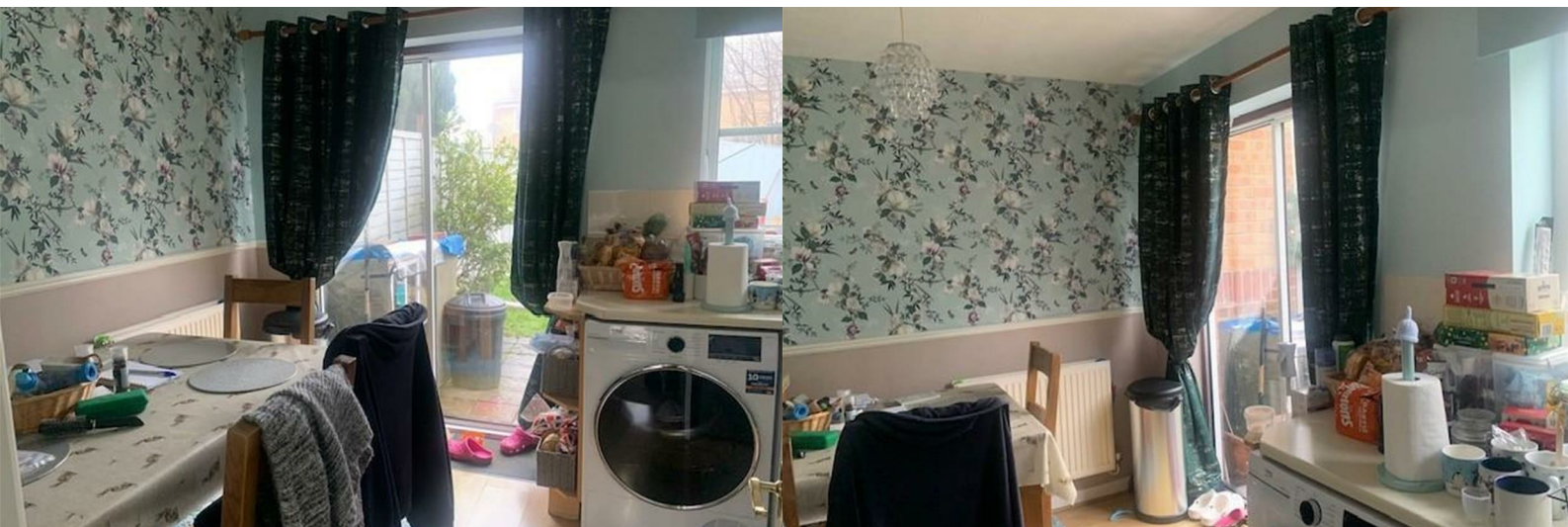
Aquarius Homes



10 Saxon Way

Peasedown St. John, Bath, BA2 8TR

Offers In The Region Of £260,000



10 Saxon Way

Peasedown St. John, Bath, BA2 8TR

Offers In The Region Of £260,000



Front

Path and Steps to Front Door.

Hallway

Door to Front. Stairs to First Floor. Carpet Flooring. Door to Lounge. Pendant Light Fitting.

Lounge

Door to Kitchen. Door to Hallway. UPVC Double Glazed Windows to Front. Pendant Light Fitting. Carpet Flooring.

Kitchen

Patio Doors to Rear. Window to Rear. Radiator. Laminate Flooring. Pendant Light Fitting. Fitted Kitchen with appliances. Wood Look Work Surfaces.

Landing

Loft Access. Stairs from Ground Floor. Doors to Bedrooms and Family Bathroom.

Bedroom 1

Double Glazed Window to Front. Double Bedroom with built in wardrobes. Pendant Light Fitting. Radiator. Carpet Flooring.

Bedroom 2

Door to Landing. Double Glazed Window to Rear. Radiator. Pendant Light Fitting. Carpet Flooring.

Rear Garden

Patio Area. Mainly Laid to Lawn with Fencing Surrounding.

Family Bathroom

Door to Landing. Privacy Glazed Window to Rear. White

Suite Comprising: Bath with Shower Over, Low Level WC, Pedestal Wash Hand Basin. Central Light Fitting. Radiator.



Road Map



Hybrid Map



Terrain Map



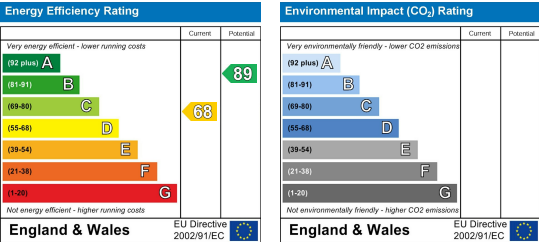
Floor Plan



Viewing

Please contact our Aquarius Homes Office on 01225 840007 if you wish to arrange a viewing appointment for this property or require further information.

Energy Efficiency Graph



These particulars, whilst believed to be accurate are set out as a general outline only for guidance and do not constitute any part of an offer or contract. Intending purchasers should not rely on them as statements of representation of fact, but must satisfy themselves by inspection or otherwise as to their accuracy. No person in this firms employment has the authority to make or give any representation or warranty in respect of the property.